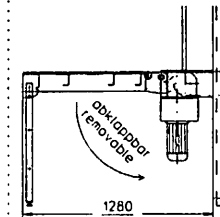
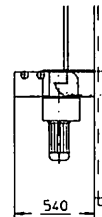


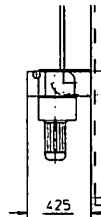
Auflageisch. ATA2
Fold away table, ATA2



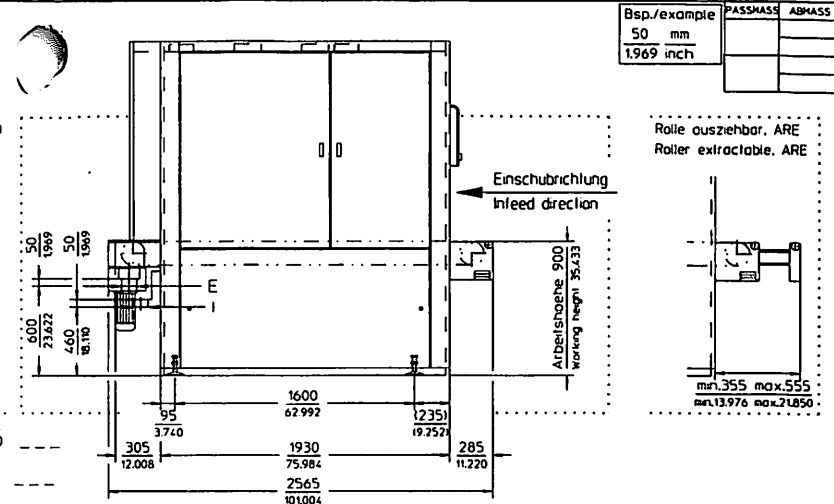
Rollen Ausruf. RTA
Roller table outlet, RTA



Angetriebene Rolle, DR0
Driven roller, DR0



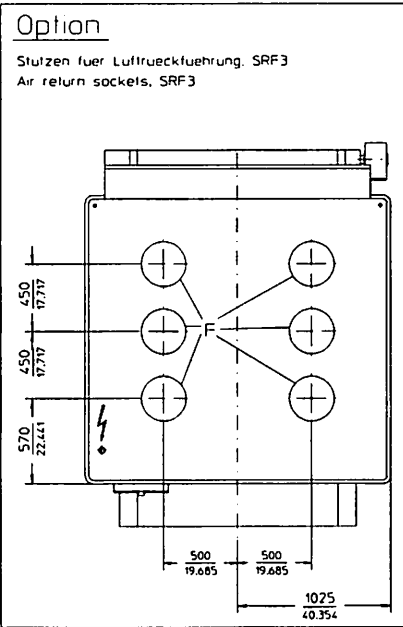
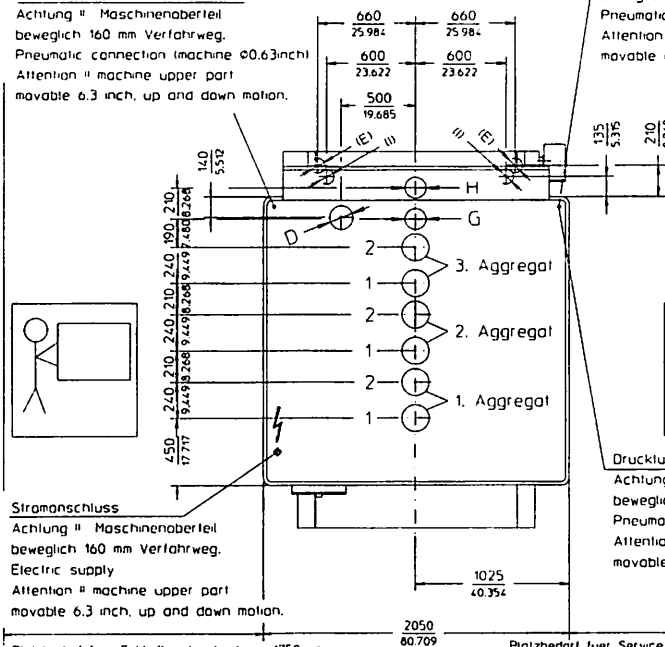
Standard Aufstellplan SWT 335
Standard layout plan SWT 335



- 1 - Stutzenposition bei Gegenlauf
- 2 - Stutzenposition bei Mitlauf
- 1 - Position of dust outlet, against feed direction
- 2 - Position of dust outlet, with feed direction

| | |
|--|--------------------------|
| Absaugung (Maschinenwiderstand) Dust extraction (resistance of the machine) | 800 Pa |
| Pneumatik (Zuleitung) Pneumatics (feed pipe) | 6 - 8 bar 2 x Ø 16 mm |
| Elektrik (Schutzart) Electric (degree of protection) | IP54 |
| Gewicht Weight | ca. 5500 kg |

Druckluftanschluss (Maschine Ø16mm)
Achtung !! Maschinenoberteil
beweglich 160 mm Verfahrweg.
Pneumatic connection (machine Ø0.63inch)
Attention !! machine upper part
movable 6.3 inch, up and down motion.



| | Ø Stutzen Ø Sockets | Pneumatik Pneumatics | Elektrik Electrics |
|-------------------------------------|------------------------|-------------------------|-----------------------|
| 1 E - Aggregat | Ø 180 mm | 20 l/min | |
| 2 E - Head | Ø 180 mm | 40 l/min | |
| 1 H - Aggregat | Ø 180 mm | 20 l/min | |
| 2 H - Head | Ø 180 mm | 20 l/min | |
| 1 C / X - Aggregat | Ø 180 mm | 20 l/min | |
| 2 C / X - Head | Ø 180 mm | 20 l/min | |
| 1 R - Aggregat | Ø 180 mm | 65 l/min | |
| 2 R - Head | Ø 180 mm | 20 l/min | |
| 1 O - Aggregat inkl. BV | Ø 160 mm | 65 l/min | |
| 2 O - Head incl. BV | Ø 180 mm | 20 l/min | |
| 1 B - Aggregat | Ø 180 mm | 530 l/min | |
| 2 B - Head | Ø 180 mm | 430 - 830 l/min | |
| 1 T - Aggregat | Ø 180 mm | 20 l/min | |
| 2 T - Head | Ø 180 mm | 20 l/min | |
| 1 M - Aggregat (2 Stutzen) | 1 Ø 225 mm | 20 l/min | |
| 2 M - Head (2 Sockets) | 2 Ø 180 mm | | |
| Bandabblösvorrichtung, BV | | 530 l/min | |
| Air-jet bell blower, BV | | | |
| Bandabblösvorrichtung regelbar, BVR | | 430 - 830 l/min | |
| Air-jet bell blower adjustable, BVR | | | |
| D Vakuum integriert VAK13 | Ø 160 mm | 1590 cbm/h | 5,5 kW |
| Vacuum integrated, VAK13 | | | |

Vorbereitung der Maschine fuer max. 2 der folgenden 5 Optionen.
Machine preparation for max. 2 of the following 5 options.

| | | | |
|----------------------------|----------|---------|-----------|
| G Finish-Buerste, FBM | Ø 140 mm | | |
| H Cleaning brush, FBM | Ø 140 mm | | |
| G Salmerbuerste, SBB | Ø 140 mm | | 5,5 kW |
| H Salinzing brush, SBB | Ø 140 mm | | |
| G Strukturuerbuerste, SBA | Ø 140 mm | | 5,5 kW |
| H Structuring brush, SBA | Ø 140 mm | | |
| H Reinigungsanlage, R11 | Ø 140 mm | Ø 13 mm | 700 l/min |
| Cleaning unit, R11 | Ø 140 mm | Ø 13 mm | 700 l/min |
| H Werkstueckreinigung, WRD | Ø 140 mm | Ø 13 mm | 700 l/min |
| Workpiece cleaning, WRD | Ø 140 mm | Ø 13 mm | 700 l/min |

Vorbereitung der Maschine fuer max. 1 der folgenden 2 Optionen.
Machine preparation for max. 1 of the following 2 options.

| | | | |
|-----------------------------------|--------------|---------|------------|
| I Gurttrennungsbuerste, GRM | 2 x Ø 100 mm | | |
| Conveyor belt cleaning brush, GRM | | | |
| E Gurtabblösvorrichtung, GAV | 2 x Ø 100 mm | Ø 13 mm | 1440 l/min |
| Conveyor belt cleaning, GAV | | | |

Empfohlene Versicherung (Ampere) / Recommended main fuse (ampere)

| Anschlussleistung Maschine Voltage Connected power machine | <32kW | <40kW | <50kW | <65kW | <85kW | <100kW | <125kW |
|---|----------|-------|-------|-------|-------|--------|--------|
| 230V / 60Hz | 100-125A | 125A | 160A | 200A | 250A | 315A | 375A |
| 400V / 50Hz | 60-80A | 80A | 100A | 125A | 160A | 200A | 250A |
| 460V / 60Hz | | | | | | | |

Absaugvolumen (cbm/h) / Dust collection (cbm/h)

| Ø Sockets Air speed Luftgeschwindigkeit | Ø Stutzen | | | | |
|---|----------------------|------------------------|------------------------|------------------------|------------------------|
| | 100mm | 140mm | 160mm | 180mm | 225mm |
| min. 20m/s max. 23m/s | 565cbm/h 650cbm/h | 1100cbm/h 1275cbm/h | 1450cbm/h 1665cbm/h | 1830cbm/h 2105cbm/h | 2865cbm/h 3290cbm/h |
| min. 25m/s max. 28m/s | 705cbm/h 790cbm/h | 1385cbm/h 1550cbm/h | 1810cbm/h 2025cbm/h | 2290cbm/h 2565cbm/h | 3580cbm/h 4010cbm/h |

| | | |
|--|--------------|-----------------------------------|
| F Stutzen fuer Luftueckuehrung, SRF3 Air return sockets, SRF3 | 6 x Ø 300 mm | |
| ABLENDJHR. | DATUM | NAMEN |
| DATE | DATE | NAME |
| DATE | DATE | NAME |
| BENENNUNG Aufstellplan SWT 335 all Optionen | | ZEICHNUNGS-NR. 5-311-60-1661 - |
| 36 Copyright reserved | | A2 |
| BL. 1 | BL. 2: 1 | |